



**FREE**

***Create with Confidence***

**Quality**  
**Selection**  
**Creativity**

**Complete Color  
Thread Chart**

Featuring over 600  
distinct colors available  
in 4 weights

Plus pocket-sized  
inventory chart



**SULKY**<sup>®</sup>  
CREATE WITH CONFIDENCE



**SULKY**  
CREATE WITH CONFIDENCE

# THREAD CHART

## 40 wt. Rayon

All 388 colors are available in 40 wt. Rayon.

## 30 wt. Rayon

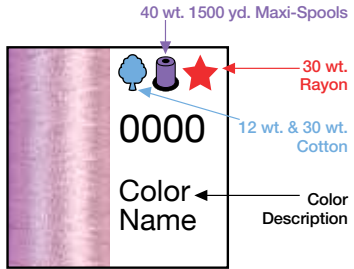
The ★ indicates the 156 colors that are also available in the heavier Sulky 30 wt. Rayon.

## 12 wt. & 30 wt. Cotton

The ● indicates the 66 Solid Cotton Colors available in heavy 12 wt. and Lt.er 30 wt.

## 40 wt. Poly Deco

The 138 color numbers printed in green are also available in Sulky Poly Deco™ 40 wt.

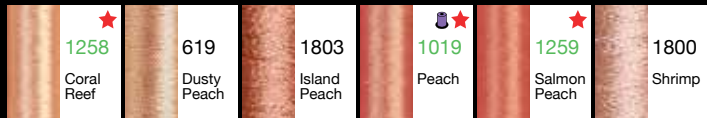
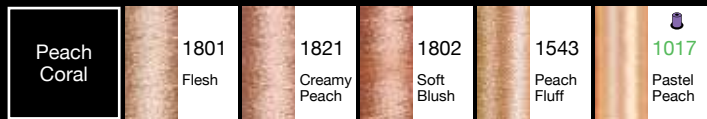
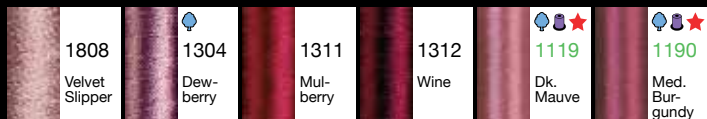
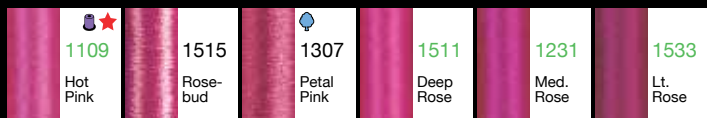
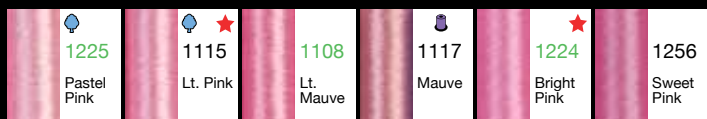
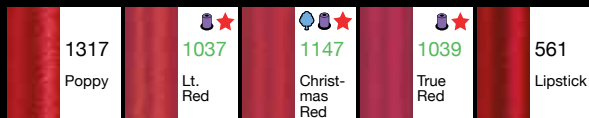


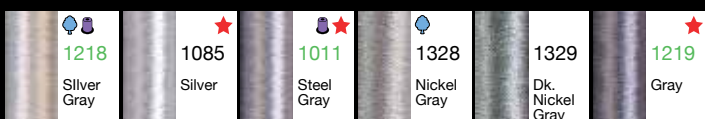
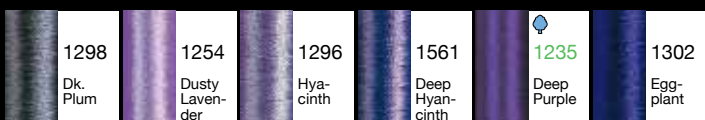
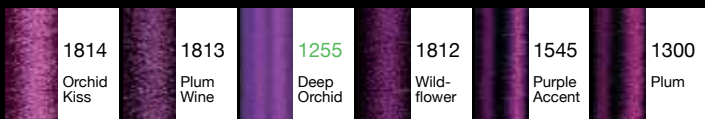
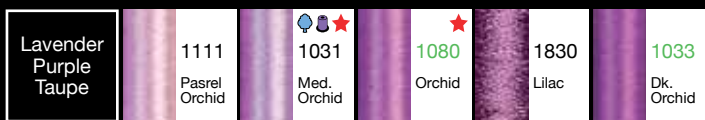
Note: Colors may vary from actual spools.

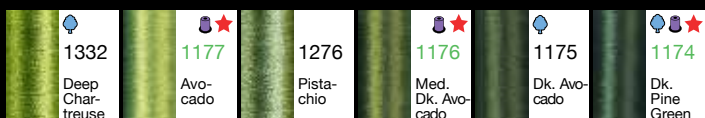
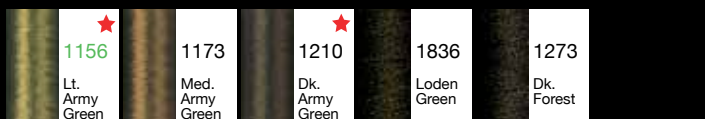
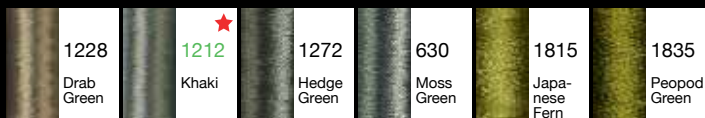
All Rayon and Poly Deco colors are available in regular and king size snap-end spools. All Cotton Threads are only available in king size spools. Additionally, most colors are available in Jumbo Cones. Visit [www.sulky.com](http://www.sulky.com) for a complete listing of colors and size availability.

White Cream Yellow Gold	●●★ 1001 Bright White	● 1002 Soft White	●●★ 1071 Off White	1022 Cream	●●★ 1061 Pale Yellow
1067 Lemon Yellow	1829 Crème Brulé	★ 1066 Prim- rose	● 1135 Pastel Yellow	1167 Maize Yellow	●★ 1023 Yellow
● 1124 Sun Yellow	★ 1187 Mimosa Yellow	★ 1185 Golden Yellow	502 Cornsilk	★ 1083 Spark Gold	1333 Sun- flower Gold
★ 1137 Yellow Orange	●●★ 1024 Golden Rod	1832 Desert Glow	● 567 Butterfly Gold	523 Autumn Gold	●★ 1025 Mine Gold
1826 Galley Gold	1262 Dk. Autumn Gold	1159 Temple Gold	1260 Sum- mer Gold	1243 Spring Moss	1227 Gold Green
1817 Lemon Grass	1834 Pea Soup				

Cream Beige Brown Rust Mahogany	520 Bone	1082 Ecu	508 Sand	1127 Med. Ecu	1828 Sea- shell
1149 Deep Ecu	1128 Dk. Ecu	1838 Cocoa Cream	1269 Mush- room	1839 Cameo	1054 Med. Dk. Ecu
1837 Lt. Cocoa	1822 Toffee	1823 Cocoa	1070 Gold	1055 Tawny Tan	1549 Flax
562 Spice	1819 Out- back	1313 Bitter- sweet	1126 Tan	1056 Med. Tawny Tan	521 Nutmeg
568 Cinna- mon	1158 Dk. Maple	1021 Maple	1237 Deep Mauve	1216 Med. Maple	1217 Chest- nut
1264 Cognac	621 Sunset	1181 Rust	1180 Med. Taupe	1266 Toast	1265 Burnt Toast
1179 Dk. Taupe	1170 Lt. Brown	1267 Mink Brown	1129 Brown	1130 Dk. Brown	1059 Dk. Tawny Brown
1131 Cloister Brown	1057 Dk. Tawny Tan	1058 Tawny Brown	1186 Sable Brown	1247 Mahog- any	1214 Med. Chest- nut
1215 Black- berry	1183 Black Cherry	Lt. Orange Red	1239 Apricot	1238 Orange Sunrise	1065 Orange Yellow
1168 True Orange	1833 Pump- kin Pie	1078 Tanger- ine	1827 Coral Sunset	1184 Orange Red	1246 Orange Flame

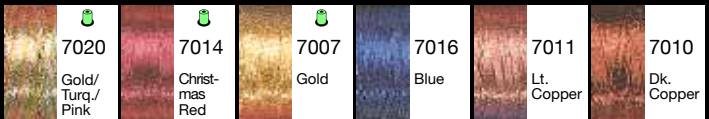
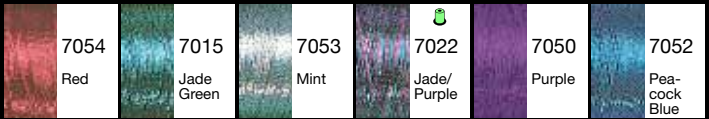






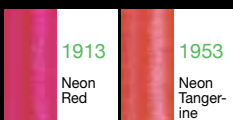
# Sulky Original Metallic

36 Sparkling colors of top quality Metallic Thread. This round, foil-wrapped thread is smooth, strong, pliable and easy to sew. For best results use Size14/90 Machine Needle. Perfect for Sergers, Sewing Machines and Hand Work. Washable and Dry Cleanable.  
**also available in 1,000 yd. Kingsize Spools**



# Sulky Neon Poly Deco Threads

Most colors are available in Jumbo Cones.  
 Visit [www.sulky.com](http://www.sulky.com) to see available colors.

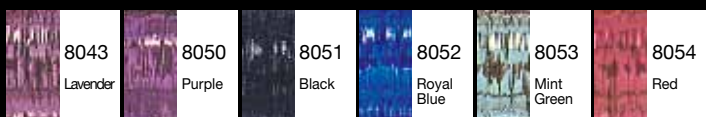
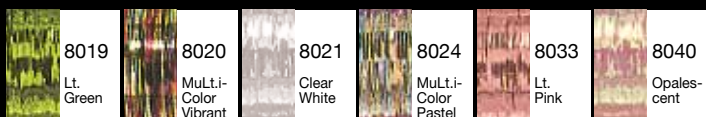
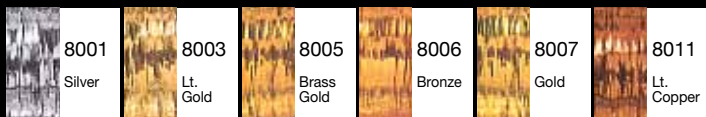


# Sulky Sliver™ Metallic

Sulky Sliver is a thin, flat, ribbon-like polyester film that is metalized with aluminum to make it brilliantly reflective.

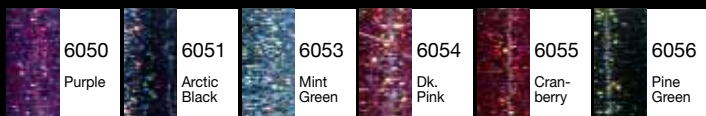
Perfect for both hand and machine work.

Machine washable. Iron on low heat.



# Sulky Holoshimmer™ Metallic

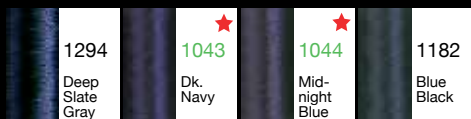
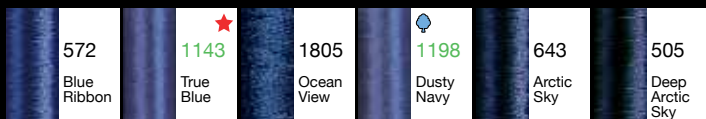
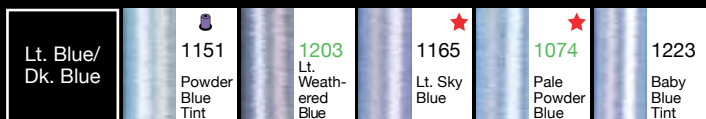
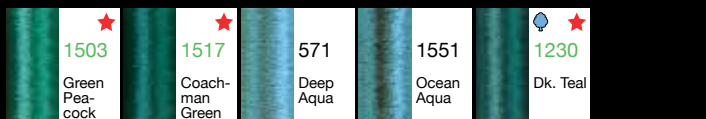
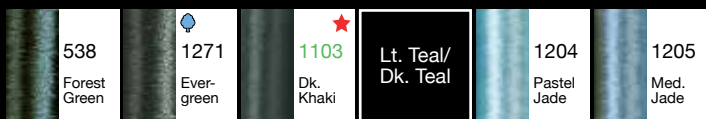
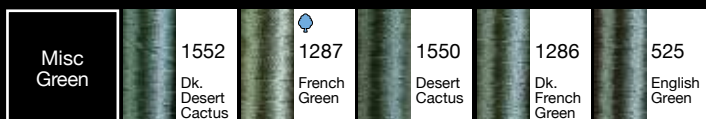
Sulky Holoshimmer is a thin, flat, ribbon-like polyester film that is metalized with a holographic foil to make it brilliantly reflective. Perfect for both hand and machine work. Machine washable. Iron on low heat.



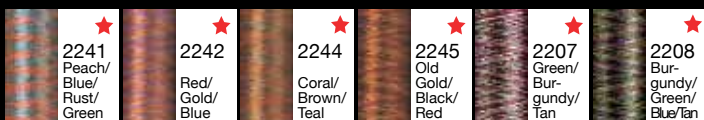
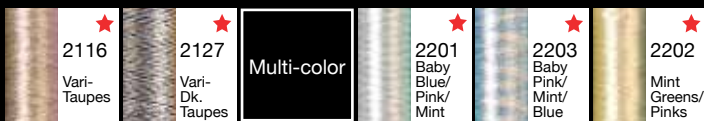
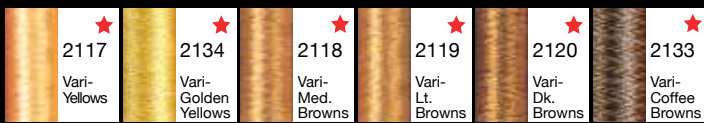
Use both Sliver™ and Holoshimmer™ on a vertical spool pin which allows the spool to turn while stitching. Set top tension on a lower setting.

Use size 14/90 embroidery, top stitching or metallic needle. Sew slower.





Misc Blue	1226 Dk. Periwinkle	1242 Nassau Blue	1293 Deep Nassau Blue	1042 Bright Navy Blue	1200 Med. Dk. Navy
1199 Admiral Navy Blue	1197 Med. Navy	1283 Slate Gray	1291 Winter Sky	1172 Med. Weathered Blue	1284 Dk. Winter Sky
1134 Peacock Blue	1202 Deep Turquoise	1206 Dk. jade	1285 Dk. Sage Green	1162 Deep Teal	1233 Ocean Teal
1171 Weathered Blue	1536 Midnight Teal	Turquoise	1513 Wild Peacock	1560 Marine Aqua	1090 Deep Peacock
1096 Dk. Turquoise	1251 Bright Turquoise	1250 Duck Wing Blue	1095 Turquoise	1094 Med. Turquoise	1252 Bright Peacock
1534 Sapphire	Variegated	2100 Vari-Pastel Pinks	2122 Vari-Baby Pinks	2101 Vari-Pinks	2102 Vari-Roses
2123 Vari-Reds	2104 Vari-Pastel Blues	2105 Vari-Teal Blues	2106 Vari-Blues	2107 Vari-Navy Blues	2121 Vari-Orchids
2124 Vari-Purples	2125 Vari-Royal Purple	2130 Vari-Fuchsias	2112 Vari-Mint Greens	2111 Vari-Grass Greens	2113 Vari-Bright Greens
2114 Vari-Avocado Green	2115 Vari-Pine Greens	2128 Vari-Willow Greens	2132 Vari-Aqua Teals	2110 Vari-True Greens	2129 Vari-French Grns
2131 Vari-Khakis	2108 Vari-Grays/Silvers	2109 Vari-Grays/Blacks	2135 Vari-Peaches	2103 Vari-Oanges	2126 Vari-Rust Peaches



All Sulky Rayon Threads are made exclusively from ENKA fibers, tested and proven to be the highest quality Rayon/Viscose fibers in the world. That's why Sulky has been awarded

the prestigious ENKA symbol that is joined with the Sulky symbol. It means that you can be sure that you are always buying the very highest quality Rayon thread made anywhere in the world. Sulky/ENKA quality is visible, provable and traceable. Go to [www.sulky.com](http://www.sulky.com) to see the detailed proof.

## SNAP-OPEN SPOOLS

1500 yd. maxi-spool  
270,000 embroidery stitches

250 yd. spool  
44,000 embroidery stitches



5,500 yd. Jumbo Cone  
1,000,000 stitches

850 yd. spool  
156,000 embroidery stitches

- Eliminates loose ends and messy thread boxes.
- Easy to find beginning and end.

# Blendables®



4001 Parchment



4012 Baby Soft



4048 Gentle Hues



4103 Pansies



4024 Heather



4025 Hydrangea



4046 Sweet Rose



4030 Vintage Rose



4005 Strawberry Daiquiri



4008 Peach Parfait



4043 Tropical



4035 Pretty Roses



4042 Redwork



4125 Butter & Sky



4013 Sun & Sea



4015 Cool Waters



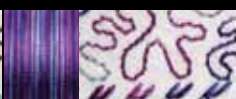
4016 Peacock Plume



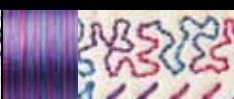
4021 Truly Teal



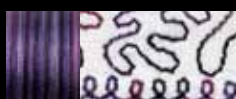
4110 Light Jewels



4032 Iris



4111 Deep Jewels



4033 Grape Wine



4126 Basic Brights



4104 Christmas Trio



4112 Vintage Holiday



4116 Garden Florals



4049 Melon Soft



4026 Earth Pastels



4102 Spring Garden



4047 Princess Garden



4127 Summer Garden

4029 Mocha Mauve

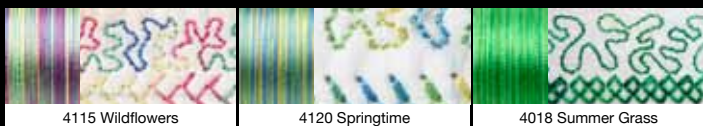
4122 Rosebud Sweet



4101 Easter Eggs

4041 Fiesta

4124 Summertime



4115 Wildflowers

4120 Springtime

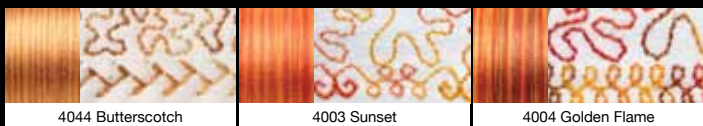
4018 Summer Grass



4057 Fresh Butter

4002 Buttercream

4040 Biscuit



4044 Butterscotch

4003 Sunset

4004 Golden Flame



4006 Autumn

4117 Fall Holidays

4010 Carmel Apple



4011 Milk Chocolate

4038 Deep Woods

4045 Summer Nights



4123 Hot Batik

4007 Red Brick

4053 Falling Leaves



4121 Rhubarb

4105 America

4108 American Antique



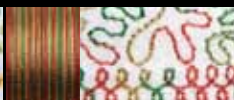
4034 Soft Blacks

4028 Storm Clouds

4119 Piano Keys



4118 Caribbean



4107 Antique Christmas



4114 Cottage Charm



4113 Country Decor



4106 Primaries



4027 Silver Slate



4023 Natural Taupe



4036 Earth Taupes



4037 Saucy Sages



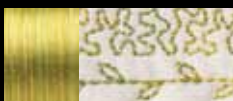
4050 Pine Palette



4051 Forever Green



4017 Lime Sherbet



4052 Lime Batik



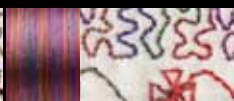
4009 Foliage



4019 Forest Floor



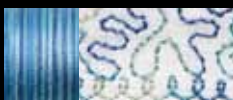
4020 Moss Medley



4054 Royal Sampler



4039 Winter Holidays



4014 Ocean Blue



4056 Periwinkles



4031 Country Colonial



4109 Jeweltones

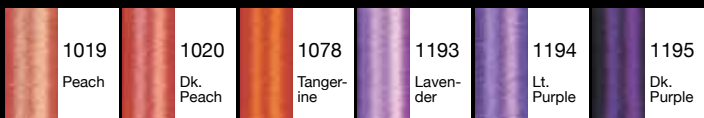
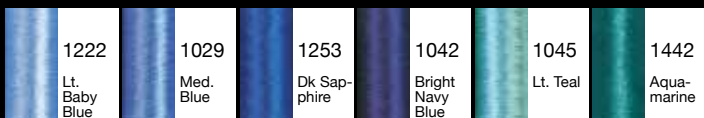


4055 Royal Navy



4022 Midnight Sky

# PolyLite™ 60 wt.



**GO GREEN**  
with  
**Sulky**  
**KK 2000™**  
Temporary Spray Adhesive

## KINDNESS

can come in many forms. Now you can be kind to yourself and the environment whenever you need a temporary fix. Sulky KK 2000 is the perfect solution for so many of your creative endeavors.

The handy size can gives you as much coverage as the bigger cans --- only with a safer non-flammable propellant, a more precise spray pattern and less waste.

Multi-color



5001 Baby Shower



5009 Baby Blanket



5005 Lilac Field



5010 Sunny Meadow



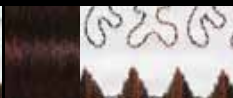
5013 Lime Citrus



5015 Teal Tango



5020 Rainforest



5019 Chocolate Mousse



5014 Golden Green



5017 Butter Pecan



5018 Creamy Toffee



5002 Golden Sun



5003 Tropical Sunrise



5004 Confetti



5006 Fuschia Flower



5008 Strawberry Shortcake



5007 American Flag



5023 Mardi Gras



5021 Blue Heather



5022 Purple Rain



5011 Blueberry Shake



5016 Earth & Sky



5012 Stormy Blue



5024 Salt & Pepper



# Stabilizer Center



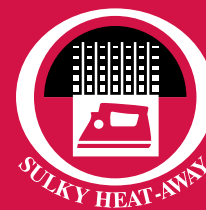
Sulky Cut-Away stabilizers are permanent, providing support during the stitching process as well as continued support through laundering and wearing. The excess is trimmed close to the stitching and remains with the project. Home and professional embroiderers use these types of stabilizers for fashion embroidery. Quilters and Creative Machine Artists use these permanent stabilizers for backings in a myriad of techniques.



Sulky Tear-Away stabilizers are temporary. They support the stitches during the sewing process and are removed when stitching is complete. Use one or more layers, and then tear away the layers separately to protect stitches from being pulled or distorted. Also available in an iron-on and a self-adhesive, these temporary stabilizers support dense satin stitching and machine embroidery, preventing fabrics from tunneling or puckering.



Sulky Wash-Away stabilizers are temporary and easily removed with water. Use as toppers in machine embroidery, as a pattern guide or template for appliqué and quilting, and even to replace fabric by stitching or embroidering directly onto a heavy wash-away stabilizer. Once the stabilizer is removed only the beautiful decorative stitches remain. Paper piecing is easy with Paper Solvy, the paper wash-away.



Sulky Heat-Away stabilizer is temporary. When water is not an option for removing a stabilizer and tearing could damage the stitching or fabric, Heat away is an excellent option. It is used as a stitching support for Battenberg lace, cut work, lace work and decorative edging. Sulky Heat-Away Stabilizer is appropriately named because you heat it with an iron and brush it away.

### **Soft 'n Sheer™**

Lightweight, permanent stabilizer - Ideal as a backing stabilizer for dense embroidery or complex designs on lightweight knits and wovens, and open-weave fabrics. Sheer enough so it doesn't show through most fabrics when the excess is trimmed away, and soft enough for baby items. Remains with the fabric for continued stabilization through laundering and wearing. May be used in layers. Available in both black and white.

### **Cut-Away Plus™**

Medium-weight, permanent stabilizer - Ideal for denser machine embroidery, appliqué, monogramming on heavier knits, outerwear, sweatshirts, etc. Remains with the fabric for continued stabilization through laundering and wearing. Once the stitching is completed, remove from the hoop and cut away the stabilizer up to the outer edge of stitching.

### **Tear-Easy™**

Lightweight, temporary stabilizer - Ideal as a backing stabilizer. Use as many layers as needed for support, then easily tear away one layer at a time. Using Tear-Easy prevents the pulling, tearing or distorting of delicate straight stitching when removing it from embroidered designs that have both satin stitching and straight stitching. Available in both black and white.

### **Totally Stable®**

Iron-on, temporary stabilizer - Ideal as a backing to stabilize knit and stretch fabrics when appliquéing, monogramming, embroidering and doing charted needlework. Use as pattern copy paper or as a quilt-piecing template. Can be re-ironed several times. When torn away, it leaves no sticky residue. Available in both black and white.

### **Fabri-Solv™**

Fabric-like, temporary stabilizer - Use as a topper or backing. Hoop alone and computerized embroidery can be stitched directly on it without being affected by the heat of the machine. It has a soft-hand that feels and handles like fabric. Dissolves away quickly in water.

### **Sticky Fabri-Solv™**

Sticky Fabri-Solv works just the same as Fabri-Solv only it has a self-stick back which is accessed by removing a release sheet. It's like magic for turned appliqués: Stitch it, turn it, and stick it. It holds small, lightweight items in place for hoopless and reversible embroidery. Ideal for accurate placement of loose items when making scarves or thread collages. Copy or print your designs onto it, then peel off the release sheet and stick the design in place for hand embroidery, appliqué, punchneedle, machine and hand quilting. With no paper component, it washes away quickly and completely every time!

### **Solv®**

Lightweight, temporary stabilizer - The perfect topper when embroidering to keep stitches from sinking into fabric like sweater knits and fleece, and to hold down toweling nap. Use it for thread sketching, quilting, cut work, monograms,

### **Heat-Away Clear Film™**

Use as a topper or stabilizer on all fabrics that can withstand iron temperatures of 260-300 degrees - similar to a cotton setting on most irons. Perfect for computer embroidered lace, cut work, Battenberg lace, free-motion thread lace, and 3-D thread appliqués. To remove, press with a hot iron until all the film has melted and formed little balls. Brush away remaining particles.



### **Soft 'n Sheer Extra™**

Sulky Soft 'n Sheer Extra™ is 1-1/2 times as heavy as original Soft 'n Sheer with the added convenience of having a fusible, iron-on coating. This time-saving, mid-weight, cut-away is the perfect choice when you want a cut-away that is a little heavier than Soft 'n Sheer, but not as heavy as Cut-Away Plus. Iron it onto the wrong side of your fabric, using a low temperature of about 260°. This makes it perfect for more delicate fabrics that don't

like high heat. On mid-weight knits, use one layer of Soft 'n Sheer Extra rather than two layers of the original Soft 'n Sheer. And since you iron it on, your fabric will not distort when you hoop it. It is also a wonderful backing for embellishing pillow tops, and as an interfacing in garments that you simply want to remain cool and light. When you don't want fleece or batting in a quilted garment, this is the perfect alternative.

### **Sticky+™ Self-Adhesive, Temporary Stabilizer**

Ideal as a backing stabilizer when doing computerized embroidery, especially when embroidering small pieces of ribbon, fabric, caps, etc., that do not fill a hoop. Perfect for napped fabrics like velvet, Ultra Suede™, velour, fleece, etc. Excess tears away easily.

### **Stiffy™**

Heavyweight, temporary stabilizer - Ideal as a backing stabilizer when more stability is needed. Use as many layers as needed for support, then tear away one layer at a time. Combines great stability with effortless removal.

3-D appliqué, buttonhole placement, decorative stitches, and more! Transfer a design with it or make it into liquid stabilizer. (1 yd. Solvy to 8 oz. water.)

### **Super Solvy™**

Medium-weight, temporary stabilizer - Ideal for heavy cutwork, decorative stitching, edge-stitching, thread lace, , large block monogramming, transferring a design, 3-D appliqué, turning appliqués and more! Can also be used as a topper. Both Solvy and Super Solvy dissolve quickly in water, but can often be released with just a wet Q-Tip®.

### **Ultra Solvy™**

Heavyweight, temporary stabilizer – Four times as heavy as Solvy and perfect for computerized embroidery, scarves, lace work, buttonholes, and anywhere you need a strong water soluble that will stand up to lots of stitches. Use lots of water when dissolving away.

### **Paper Solvy™**

Paper-like, temporary stabilizer – Especially good for printing designs in a copy machine, ink jet, or bubble-jet printer. Also punch needle, handwork, counted cross-stitch, heirloom work, edge work and more. Use lots of water when dissolving away.



All Sulky 8", 12" and 20" rolls are packaged in a reusable clamshell storage container to keep them fresh and usable for years.

Clear, easy-to-understand directions in every package assure success every time.

## Fuse 'n Stitch™

Heavyweight, permanent, iron-on, fusible stabilizer. Perfect for home dec items, endless-hoop designs, purses, fabric bowls, wing-needle work and more. Cut to desired size before fusing. Remains with the fabric for continued stabilization through laundering and wearing.

## Tender Touch™ Iron-On

Lightweight, permanent stabilizer – Ideal for a “cover-the-back” on finished computerized embroideries. Use as a prep for all delicate fabrics. Protects the fabric by giving it the needed support while embroidering without changing the hand or drape of the fabric. Ideal for baby and child garments, sports apparel, lingerie, spandex and golf shirts because it stretches with the garment.

## Sulky Stabilizers are available in these sizes:

	1 Yard Pkg	3 Yard Pkg	8" Roll	12" Roll	20" Roll	Bolt	Precut Sheets
<b>SULKY CUT-AWAY</b>							
Soft 'n Sheer™ White	✓	✓	✓	✓		✓	
Soft 'n Sheer™ Black	✓		✓	✓		✓	
Soft 'n Sheer Extra™	✓		✓	✓		✓	
Cut-Away Plus™	✓		✓			✓	
Fuse 'n Stitch™	✓		✓		✓	✓	
Tender Touch™	✓		✓			✓	
<b>SULKY TEAR-AWAY</b>							
Totally Stable® White	✓	✓	✓	✓	✓	✓	
Totally Stable® Black	✓		✓	✓		✓	
Tear Easy™ White	✓	✓	✓	✓	✓	✓	
Tear Easy™ Black	✓		✓	✓		✓	
Sticky+™	✓		✓	✓	✓	✓	7.5" x 9"
Stiffy™	✓		✓			✓	
<b>SULKY WASH-AWAY</b>							
Solvly®	✓	✓	✓	✓		✓	
Super Solvly™	✓		✓	✓		✓	
Ultra Solvly™	✓	✓	✓	✓		✓	
Paper Solvly™	ONLY AVAILABLE IN 8.5" X 11" SHEETS						
Fabri-Solvly™	✓		✓		✓	✓	
Sticky Fabri-Solvly™	✓		✓	✓		✓	8.5" x 11"
<b>SULKY HEAT-AWAY</b>							
Heat Away Clear Film™	✓		✓			✓	



#999LIT-4

## YOUR PERSONAL SULKY THREAD INVENTORY

No.	Rayon 40 wt.	Rayon 30 wt.	Poly 40 wt.	Cotton 12 wt.	Cotton 30 wt.	No.	Rayon 40 wt.	Rayon 30 wt.	Poly 40 wt.	Cotton 12 wt.	Cotton 30 wt.	No.	Rayon 40 wt.	Rayon 30 wt.	Poly 40 wt.	Cotton 12 wt.	Cotton 30 wt.
502						1037						1100					
505						1039						1101					
508						1040						1103					
520						1041						1104					
521						1442						1108					
523						1042						1109					
525						1043						1111					
526						1044						1112					
538						1045						1113					
561						1046						1115					
562						1047						1117					
567						1049						1119					
568						1051						1120					
569						1054						1121					
571						1055						1122					
572						1056						1124					
580						1057						1126					
619						1058						1127					
621						1059						1128					
630						1061						1129					
640						1063						1130					
643						1064						1131					
1001						1065						1134					
1002						1066						1135					
1005						1067						1137					
1011						1068						1143					
1015						1070						1145					
1016						1071						1147					
1017						1071						1148					
1019						1074						1149					
1020						1076						1151					
1021						1077						1154					
1022						1078						1156					
1023						1079						1158					
1024						1080						1159					
1025						1081						1162					
1028						1082						1165					
1029						1083						1166					
1030						1085						1167					
1031						1086						1168					
1032						1090						1169					
1033						1094						1170					
1034						1095						1171					
1035						1096						1172					

No.	Rayon 40 wt.	Rayon 30 wt.	Poly 40 wt.	Cotton 12 wt.	Cotton 30 wt.	No.	Rayon 40 wt.	Rayon 30 wt.	Poly 40 wt.	Cotton 12 wt.	Cotton 30 wt.	No.	Rayon 40 wt.	Rayon 30 wt.	Poly 40 wt.	Cotton 12 wt.	Cotton 30 wt.
1173						1218						1266					
1174						1219						1267					
1175						1220						1268					
1176						1222						1269					
1177						1223						1270					
1179						1224						1271					
1180						1225						1272					
1181						1226						1273					
1182						1227						1274					
1183						1228						1275					
1184						1229						1276					
1185						1230						1277					
1186						1231						1278					
1187						1232						1279					
1188						1233						1280					
1189						1234						1283					
1190						1235						1284					
1191						1236						1285					
1192						1237						1286					
1193						1238						1287					
1194						1239						1288					
1195						1240						1289					
1196						1241						1291					
1197						1242						1292					
1198						1243						1293					
1199						1246						1294					
1200						1247						1295					
1201						1248						1296					
1202						1249						1297					
1203						1250						1298					
1204						1251						1299					
1205						1252						1300					
1206						1253						1301					
1207						1254						1302					
1208						1255						1303					
1209						1256						1304					
1210						1257						1305					
1211						1258						1306					
1212						1259						1307					
1213						1260						1309					
1214						1262						1311					
1215						1263						1312					
1216						1264						1313					
1217						1265						1317					

No.	Rayon 40 wt.	Rayon 30 wt.	Poly 40 wt.	Cotton 12 wt.	Cotton 30 wt.	No.	Rayon 40 wt.	Rayon 30 wt.	Poly 40 wt.	Cotton 12 wt.	Cotton 30 wt.	No.	Rayon 40 wt.	Rayon 30 wt.	Poly 40 wt.	Cotton 12 wt.	Cotton 30 wt.
1321						1813						2107					
1322						1814						2108					
1325						1815						2109					
1327						1816						2110					
1328						1817						2111					
1329						1818						2112					
1331						1819						2113					
1332						1820						2114					
1333						1821						2115					
1503						1822						2116					
1508						1823						2117					
1510						1824						2118					
1511						1825						2119					
1513						1826						2120					
1515						1827						2121					
1517						1828						2122					
1533						1829						2123					
1534						1830						2124					
1535						1831						2125					
1536						1832						2126					
1543						1833						2127					
1545						1834						2128					
1549						1835						2129					
1550						1836						2130					
1551						1837						2131					
1552						1838						2132					
1554						1839						2133					
1558						1901						2134					
1560						1904						2135					
1561						1905						2201					
1644						1909						2202					
1800						1910						2203					
1801						1913						2204					
1802						1914						2205					
1803						1953						2206					
1804						2001						2207					
1805						2002						2208					
1806						2100						2209					
1807						2101						2210					
1808						2102						2240					
1809						2103						2241					
1810						2104						2242					
1811						2105						2243					
1812						2106						2244					





POLYLITE			ORIGINAL METALLIC			SLIVER™ METALLIC			HOLOSHIMMER™ METALLIC		
No.	No.	No.	No.	No.	No.	No.	No.	No.	No.	No.	No.
1001	1147	5005	7001	7016	7040	8001	8014	8033	6001	6016	6045
1005	1175	5006	7003	7018	7041	8003	8016	8040	6002	6017	6046
1011	1176	5007	7004	7020	7042	8005	8017	8043	6003	6018	6050
1019	1177	5008	7005	7021	7043	8006	8018	8050	6007	6030	6051
1020	1187	5009	7007	7022	7044	8007	8019	8051	6008	6031	6053
1029	1193	5010	7009	7023	7050	8011	8020	8052	6011	6032	6054
1035	1194	5011	7010	7024	7051	8012	8021	8053	6013	6033	6055
1042	1195	5012	7011	7025	7052	8013	8024	8054	6014	6043	6056
1045	1220	5013	7012	7026	7053	INVISIBLE POLY-ESTER THREAD		BOBBIN THREAD			
1051	1222	5014	7013	7027	7054						
1055	1224	5015	7014	7028	7055	0001	0002	0010	0020		
1057	1225	5016	7015	7029	7056	2001	2002	0015	0025		
1078	1253	5017									
1082	1442	5018									
1104	1510	5019									
1120	1511	5020									
1126	5001	5021									
1128	5002	5022									
1129	5003	5023									
1135	5004	5024									

### CARE INSTRUCTIONS:

All colors of Sulky threads are wash, boil and light fast and can be dry cleaned.

**WASHING:** Use mild to heavy duty detergents that contain NO bleaching agents such as chlorine, peroxide or sodium carbonate. Thoroughly rinse embroidery before wringing or spin drying. Never leave embroidery in a damp or wet pile.

**DRY CLEANING:** Any stain remover should not contain any bleaching agents or color removers. If they come in contact with embroidery, rinse well.

**IRONING:** All embroidered items should be ironed on the reverse side or between two pieces of cloth.

## TIPS FOR USING SULKY DECORATIVE THREADS

### SULKY SLIVER™ & HOLOSHIMMER™ METALLIC THREADS

- Use a 14/90 metallic, topstitch, or embroidery needle. Needles that are labeled for "metallic threads" still need to be 14/90 for Sliver. The 12/80's are just not big enough.
- It is important to use Sliver on a vertical spool pin. Since Sliver is a flat thread, the twisting action from a horizontal spool pin can cause breakage.
- Sew Slower
- Lower top tension substantially – on some machines as low as "1" or "0" may be necessary.
- Use a soft, pliable Sulky Stabilizer to properly stabilize your fabric.
- Use a lightweight Sulky thread in the bobbin, either a matching 40 wt. Rayon, Sulky 60 wt Bobbin thread or Polyester Invisible Thread. If breakage still occurs, a thread lubricant such as Tri-Flow, Sewers Aid, or spray silicone may help ease thread through rough or tight spaces in the thread path.

CHECK WITH YOUR SEWING MACHINE DEALER BEFORE USING ANY LUBRICANT ON YOUR MACHINE!

### SULKY ORIGINAL METALLIC

- Use a 14/90 metallic, topstitch, or embroidery needle. Needles that are labeled for "metallic threads" still should be 14/90's.
- Reduce top tension substantially.
- Stabilize with a soft, pliable Sulky Stabilizer.
- Use a lightweight Sulky Bobbin Thread.
- SEW SLOWER!!!

### SULKY RAYON 30 & 40 WEIGHT THREAD

30 weight – Use a 14/90 QUILTING, TOPSTITCH or EMBROIDERY needle.

40 weight – Use at least a 12/80 needle. Lower top tension slightly for these.

### SULKY 12 & 30 WEIGHT COTTON SOLID/BLENDABLE THREADS

12 weight – Use a 14/90 or 16/100 QUILTING or TOPSTITCH needle. Loosen top tension slightly.

30 weight – Use a 14/90 QUILTING or TOPSTITCH needle. Loosen top tension slightly.

**Questions? Visit our Website – [www.sulky.com](http://www.sulky.com)**  
**Now also featuring the "Frequently Asked Questions" section**

# SULKY BOOKS by Joyce Drexler



## Sew, Craft, Quilt and Embroider Confidently with Sulky Stabilizers

The long-awaited, ultimate guide for stabilizing, in easy-to-follow "Recipe" format, with dozens of new projects and bonus CD!

#900-B19



#900-B9  
Patchwork  
Concepts in Sulky



#900-B10  
Embroidery  
Concepts in Sulky



#900-B11  
Sulky Secrets to  
Successful Stabilizing!



#900-B12  
Dimensional  
Concepts in Sulky



#900-B13  
Sulky Secrets to  
Successful Quilting!



#900-B14  
Sulky Secrets to  
Successful Applique!



#900-B15  
Sulky Secrets to  
Successful  
Embroidery



#900-B16  
Quick and Easy  
Weekend Quilting  
with Sulky



#900-B17  
An Updated Supplement  
to Sulky's Secrets to  
Successful Stabilizing

# ACCESSORIES

## Sulky Iron-on Transfer Pens

Make an iron-on transfer out of anything you can draw or trace onto any plain piece of paper. Works every time! Make multiple transfers of images for applique, ribbon placement, bead and sequin work, fabric painting, pen and ink work and more! Almost anything that can withstand the heat of an iron including wood and glass!

Available in 8 exciting colors for light colored fabrics:

Black	Purple
Yellow	Brown
Red	Green
Orange	Blue

and Opaque White  
for Dark Fabrics



# PUFFY FOAM™



Add flair, 3-dimension and excitement to computerized embroidery, machine-fed or free-motion satin stitching, decorative stitches with satin-stitch elements. Available in 12 colors of both 2MM and 3MM to match your thread color. Puffy Foam perforates cleanly when stitched through, and makes the stitching stand well above the fabric.



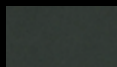
## White

2MM Item 44101  
3MM Item 45101



## Royal Blue

2MM Item 44112  
3MM Item 45112



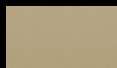
## Black

2MM Item 44102  
3MM Item 45102



## Yellow

2MM Item 44113  
3MM Item 45113



## Lt. Tan

2MM Item 44103  
3MM Item 45103



## Orange

2MM Item 44115  
3MM Item 45115



## Red

2MM Item 44104  
3MM Item 45104



## Pink

2MM Item 44116  
3MM Item 45116



## Purple

2MM Item 44105  
3MM Item 45105



## Gray

2MM Item 44117  
3MM Item 45117



## Kelly Green

2MM Item 44107  
3MM Item 45107



## Forest Green

2MM Item 44118  
3MM Item 45118

# STARS **LOVE** SULKY



Joyce Drexler  
Creative  
Director for  
Sulky



Heidi Lund  
Fiber Artist



Loralie Harris  
Loralie Designs



M'Liss Rae  
Hawley  
Quilter &  
Designer



McKenna Ryan  
Pine Needles  
Quilt Designs



Lynette Jensen  
Thimbleberries



Sue Hausmann  
"Sewing &  
Quilting  
'Edutainer'"



Kaye Wood,  
President  
Kaye Wood,  
Inc.



Marianne Fons & Liz Porter  
"Love of Quilting"



Martha Pullen  
Founder,  
Martha Pullen  
Company



Patrick Lose  
Author, Quilter,  
Fabric &  
Pattern  
Designer

## Hoffman Challenge<sup>®</sup>

*As co-sponsors of the prestigious Hoffman Challenge, Sulky invites you to enter for your chance to win some of the thousands of dollars in cash and prizes awarded each year. Plus, if your entry is chosen, you get the distinct honor of having it travel the country in a trunk show where many thousands of consumers will have a chance to admire your work!*

*Go to [www.hoffmanchallenge.com](http://www.hoffmanchallenge.com) for much more information and to fill out your online entry form today!*

# SLIMLINE STORAGE BOXES



\*Also available empty.

## **Original Slimline Thread Storage Box**

- Beautifully organizes up to 104 Small Sulky Snap-end Spools
- Fits most other brands of small spools, too!
- All spools are clearly visible and easily accessible
- Weighs only 4 lbs. when filled
- Free standing, partially opened near your machine, or fully opened and hung on a wall
- Pre-filled Thread Collections are organized and labeled by color families. Pre-printed marking strips are available free from Sulky of America. An order form is included with each Sulky Slimline Storage Box
- Easily remove a spool with the exclusive lifting tab. Spools won't fall out.
- 15 different value priced selections available!

## **Universal Slimline Thread Storage Box**

- Beautifully organizes up to 64 Large and Small snap-end Spools PLUS the smallest and next largest size of most other manufacturers.
- Free standing, partially opened near your machine or fully opened and hung on a wall
- Holds the small and next larger size spools of most major brands
- Lightweight. Weighs only 6 lbs when filled.
- Made In The USA
- 13 different value priced selections available!

For a complete listing visit [www.sulky.com](http://www.sulky.com)