

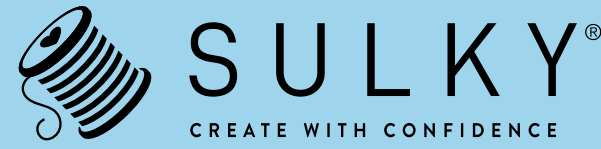


PRINTABLE

STICK 'n STITCH™

Ideal for Hand Embroidery, Cross Stitch, Punch Needle, and Quilting

FREE INSIDE
Vintage Heart-Wreath
Embroidery Pattern



FREE INSIDE
Vintage Heart-Wreath
Embroidery Pattern

Acid Free

STICK 'n STITCH™

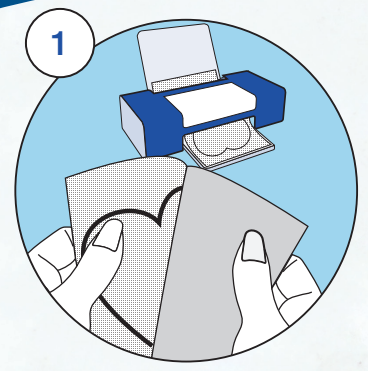
Ideal for Hand Embroidery, Cross Stitch, Punch Needle, and Quilting

This Product also goes by Sticky Fabri-Solvy™ available in these other convenient sizes:
457-01 - 20" x 1 yd. Pkg
457-08 - 8" x 6 yd. Roll
457-12 - 12" x 6 yd. Roll
457-25 - 20" x 25 yd. Bolt

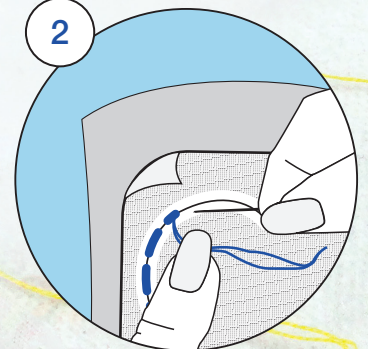
 **SULKY®**
CREATE WITH CONFIDENCE
© 2021 ALL RIGHTS RESERVED
Sulky of America, Inc., 980 Cobb Place Blvd.
Suite 130, Kennesaw, GA 30144
www.sulky.com

Country of Origin: Taiwan
Converted and Packaged in USA

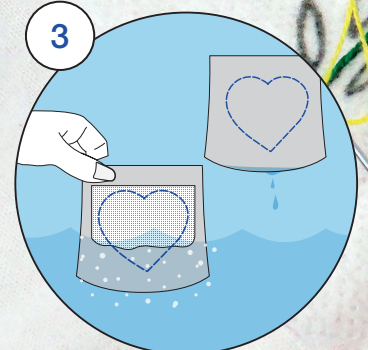
7 27072 45902 3



1
Print/Copy on Stick 'n Stitch then remove backing



2
Stick on fabric and stitch



3
Rinse away when finished

WEIGHT: Medium

COLOR: White

SIZE: 12 Shts, 8½" x 11"

Instructions Included
Item no. 459-02



Stick 'n Stitch™

How to use Stick 'n Stitch to easily get a design in place for Hand Embroidery

1. Print a design onto Stick 'n Stitch by placing the design in a copy machine (or you can print a design from your computer to your laser, ink-jet or bubble-jet printer). Place Stick 'n Stitch in the paper tray so that the design will print on the fabric side - not the release sheet. Use a light (draft) setting on your printer or copy machine to print your design, then peel off and dispose of the release sheet; smooth the printed design in place for Hand Embroidery, Appliqué, Quilting or Punch Needle.
2. Once stitching is completed, carefully cut away the excess Stick 'n Stitch. Remove any that remains by submerging and agitating the project in warm water for 2 to 3 minutes OR use your kitchen spray hose or faucet by holding the project at an angle under the running water; rinse from top to bottom to be sure all the ink is flowing away from your project. Rinse thoroughly. Remove as much moisture as possible by rolling in a towel. Air dry on a towel or in a dryer, if your project allows. If any stiffness remains after it is dry, simply repeat the process.

Note: *Since printers and inks vary, always do a test sample to verify that your ink does not bleed, and that it washes out completely along with the Stick 'n Stitch. If the ink in your printer or copy machine bleeds, use a different machine. Also, some copy machines or printers may prefer that the Stick 'n Stitch is fed into it one sheet at a time.*

Fabric manufacturers use different finishes and/or sizings, some of which may prevent Stick 'n Stitch from sticking to the fabric. If this occurs, soak your fabric first to remove the finish and/or sizing; dry and use.

3. Stick 'n Stitch is also great for transferring a design for machine applications like quilting, monogramming, thread sketching, or as a template for computerized machine embroidery. Visit www.sulky.com for more ideas and to sign up for our informative newsletter.

BONUS HINT: *Stick 'n Stitch helps you stitch better because it has a slight grid pattern, which you can use to space your stitches more evenly. Also, you can move or reposition your design if you don't like your initial placement; and you may not need an embroidery hoop because Stick 'n Stitch holds the fabric stable, which minimizes distorted fabric!*

Another Sulky Product that will change your life is Sulky Petites™ Cotton Thread. Available in 160 vibrant colors, it is the handiest handwork thread because it is easier, faster and more fun than floss! Since one strand of Sulky 12 Wt. Petites Cotton Thread is equivalent to two strands of floss, there are huge benefits to you:

- You no longer have to separate floss
- There is no tangling
- You can cut any length you want, and
- With the snap-end spool, storage is tidy with no loss of color identity.

TIP: *All pressure sensitive stabilizers (which have a release sheet), can become more sticky with heat and less sticky with cold. Should you experience any drag on your needle or glue build-up, wipe your needle occasionally with an alcohol pad or apply some Sewer's Aid™ (a needle and thread lubricant) to your needle.*